

Lockable Gripples



New, innovative, lockable system for securing wire ropes - quickly.

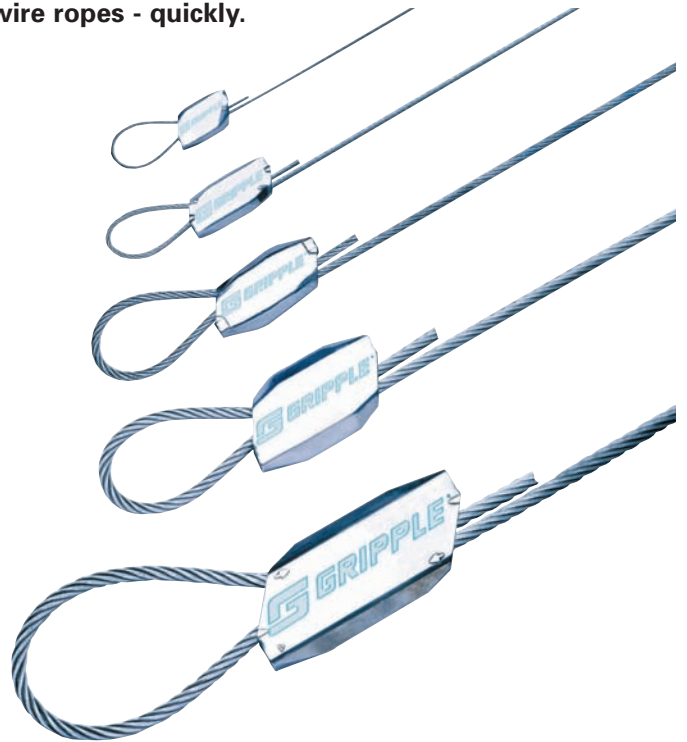
The Lockable Gripple now makes catenary and bracing wire rope installation easier and faster. The Lockable Gripple is designed to secure the ends of wire ropes by simply pushing them through the Gripple in one continuous loop. Hands free, the integral locking screws can be tightened to ensure total security under dynamic load conditions.

Easy to use - faster to fit!

- Simple push-fit assembly
- Hands-free adjustment
- Automatic locking wedges
- Easy tensioning
- Secure locking screws

APPLICATIONS:

- Overhead catenary wires
- Carnival and promenade lighting
- Exhibition hall displays
- Extraction duct bracing
- Aerial bracing
- Marquee bracing
- Shade cloth bracing
- Tree bracing



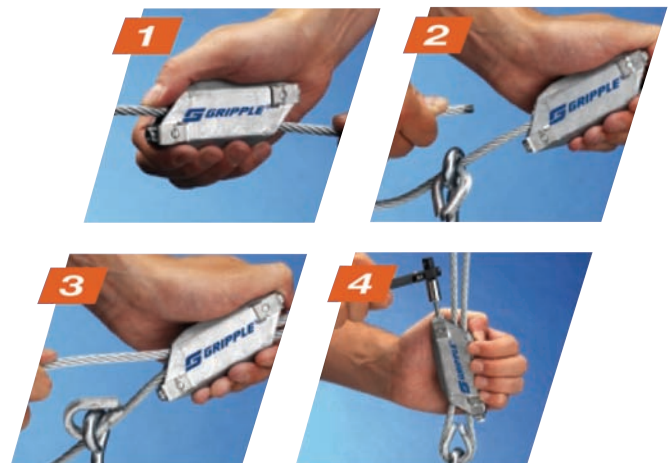
Self-Locking Wire Rope Grip Model mm	Working Range and Load Limit	Gripple Minimum Breaking Load kg	Working Range mm
2.00	10-80	400	1.5 - 2.5
3.00	80-200	1000	2.5 - 4.0
5.00	200 - 400	2000	4.0 - 5.5
6.00	400 -545	2725	5.5 - 7.0
8.00	545 - 1280	6400	7.0 - 8.5
10.00	545 - 1280	6400	8.5 - 10.0
11.00	1280 - 1820	9100	10.0 - 11.5
13.00 / 1/2in.	1280 - 1820	9100	11.5 - 13.0

4 simple steps to secure in seconds

The unique locking screw design combats the effects of wind-gallop a typical feature of outside applications.

Once the wire rope length and tension have been set, tightening the lock screws firmly secures the internal locking wedges immovably in place.

As well as preventing wear this feature allows the product to be used on both steel and fibre core wire rope constructions.



SYDNEY
 Phone: (02) 9531 8033
 Fax: (02) 9531 7933
 Email: sales@hesnsw.com.au
 www.hesnsw.com.au

MELBOURNE
 Phone: (03) 9480 5577
 Fax: (03) 9480 0855
 Email: sales@hesvic.com.au
 www.hesvic.com.au

ADELAIDE
 Phone: (08) 8244 7611
 Fax: (08) 8244 7699
 Email: sales@schillings.com.au
 www.schillings.com.au

PERTH
 Phone: (08) 9355 4218
 Fax: (08) 9472 7970
 Email: sales@heswa.com.au
 www.heswa.com.au

