

# Girder Trolleys

Push type

Capacities: 500kg to 10 tonnes



**FEATURES**

- Lightweight robust construction
  - Super-quick adjustment to any monorail
  - Durable baked enamel paint protection
  - Precision ball bearing trolley wheels
- COMPLIES WITH AS/NZS1418.2**

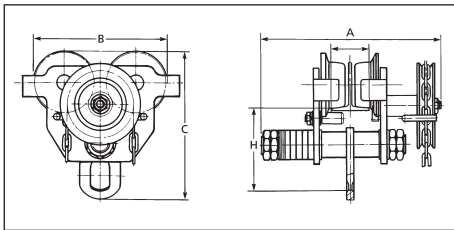
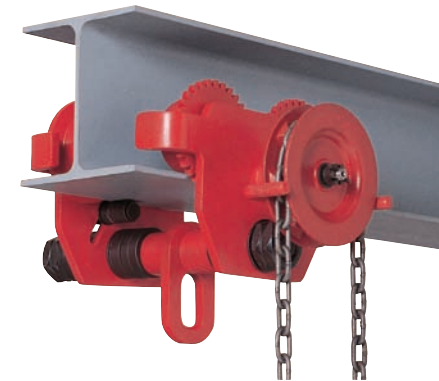
Product Code		OPT05	OPT1	OPT2	OPT3	OPT5	OPT10
Rated Capacity		0.5 t	1 t	2 t	3 t	5 t	10 t
Adjustable Beam Width	mm	64-152	64-210	88-210	102-210	114-210	125-210
Clearance Dimensions	mm						
	A	254	318	335	357	368	405
	B	216	260	300	345	395	455
	C	195	239	286	336	393	500
	H	110	135	161	185	220	280
Min. Radius Curve	m	.9	1.0	1.1	1.3	1.4	1.7
Net Weight	kg	8	14	21	36	51	90

## Geared type

Capacities: 1 tonne to 20 tonnes

**FEATURES**

- Lightweight robust construction
  - Super-quick adjustment to any monorail
  - Durable baked enamel paint protection
  - Precision ball bearing trolley wheels
- COMPLIES WITH AS/NZS1418.2**



Product Code		OGT1	OGT2	OGT3	OGT5	OGT10
Rated Capacity		1 t	2 t	3 t	5 t	10 t
Adjustable Beam Width	mm	64-210	88-210	102-210	114-210	125-210
Clearance Dimensions	mm					
	A	380	390	513	430	468
	B	260	300	345	395	470
	C	239	286	336	393	500
	H	135	161	188	220	280
Min. Radius Curve	m	1.0	1.1	1.3	1.4	1.7
Net Weight	kg	18	27	43	60	105

\* N.B. Specifications for 20 tonne SWL available on application.

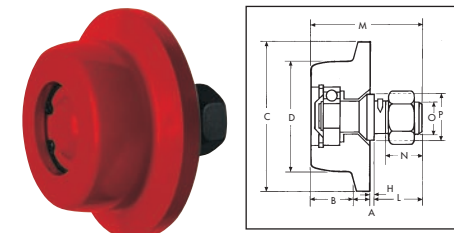
# Girder Trolley Wheels

SINGLE FLANGE PLAIN TYPE

Capacities: 500kg to 10 tonnes

**FEATURES**

- Trolley wheels have a machined thread for smooth operation on both R.S.J. or Universal beams.
  - All wheels come complete with ball bearing, axle, nut, dust cover and circlip.
  - All Steel construction.
- AVAILABLE IN CAST IRON OR FULLY FORGED**



Oz Blok Product Code	Trolley Capacity on 4 wheels	Wheel Dia. D mm	A mm	B mm	C mm	Axles					
						H mm	L mm	M mm	N mm	O mm	P mm
OTW05	500 kg	58	12	27	82	3	31	72	24	M20	32
OTW01	1 tonne	75	12	28	102	3	33	76	26	M20	32
OTW02	2 tonne	90	13	32	120	3	40	88	29	M24	36
OTW03	3 tonne	110	13	36	141	3	46	99	33	M30	42
OTW05	5 tonne	120	16	38	156	3	58	115	39	M36	48
OTW010	10 tonne	150	20	43	189	3	78	143	54	M48	67