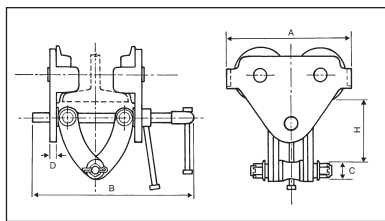




Girder Trolley with Clamp

Capacities: 1 tonne to 5 tonnes



FEATURES

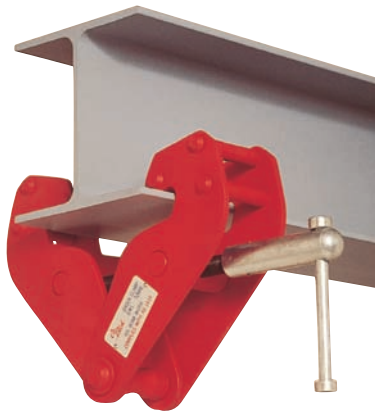
- Robust all-steel construction
- Durable baked enamel paint protection
- Super-quick adjustment to any girder width in range
- Spare parts always available

Product Code	OGCT01	OGCT02	OGCT03	OGCT05
Working Load Limit kg	1000	2000	3000	5000
Test load kN	12.25	24.5	36.8	61.3
Min. radius mm	1.1	1.3	1.5	1.7
Clearance	A 260	260	330	380
Dimensions	B 340	340	360	480
mm	C \varnothing 20	\varnothing 20	\varnothing 24	\varnothing 24
	D 10	12	14	19
	H 171-232	237-285	160-200	225-280
Beam width mm	63-203	76-203	85-210	100-305
Net Weight kg	11	13	26	46

COMPLIES WITH AS1418.2

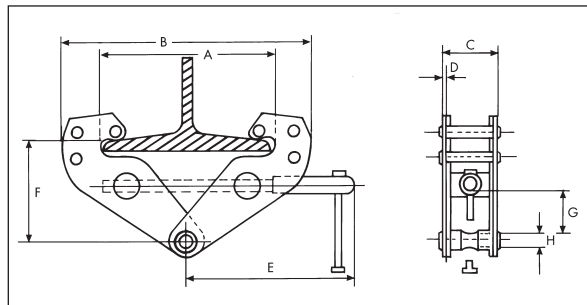
Girder Clamps

Capacities: 1 tonne to 10 tonnes



FEATURES

- Robust all-steel construction
- Durable baked enamel paint protection
- Super-quick adjustment to any girder width in range
- Spare parts always available



Product Code	Working Load Limit kg	Adjustable Beam Width mm	A			C	D	E	F		G	H
			max. mm	min. mm	max. mm				max. mm	min. mm		
OGC1	1000	75-230	278	182	380	64	4	217	150	90	26	19
OGC2	2000	75-230	278	182	380	74	6	217	150	90	26	21
OGC3	3000	80-320	356	220	500	100	8	277	220	145	50	23
OGC5	5000	90-320	356	220	500	112	10	277	220	145	47	29
OGC10	10000	90-320	356	250	520	120	12	285	230	160	52	39

COMPLIES WITH AS4991



SYDNEY
 Phone: (02) 9531 8033
 Fax: (02) 9531 7933
 Email: sales@hesnsw.com.au
 www.hesnsw.com.au

MELBOURNE
 Phone: (03) 9480 5577
 Fax: (03) 9480 0855
 Email: sales@hesvic.com.au
 www.hesvic.com.au

ADELAIDE
 Phone: (08) 8244 7611
 Fax: (08) 8244 7699
 Email: sales@schillings.com.au
 www.schillings.com.au

PERTH
 Phone: (08) 9355 4218
 Fax: (08) 9472 7970
 Email: sales@heswa.com.au
 www.heswa.com.au

