

**Riley**

## Universal SUPERCLAMP

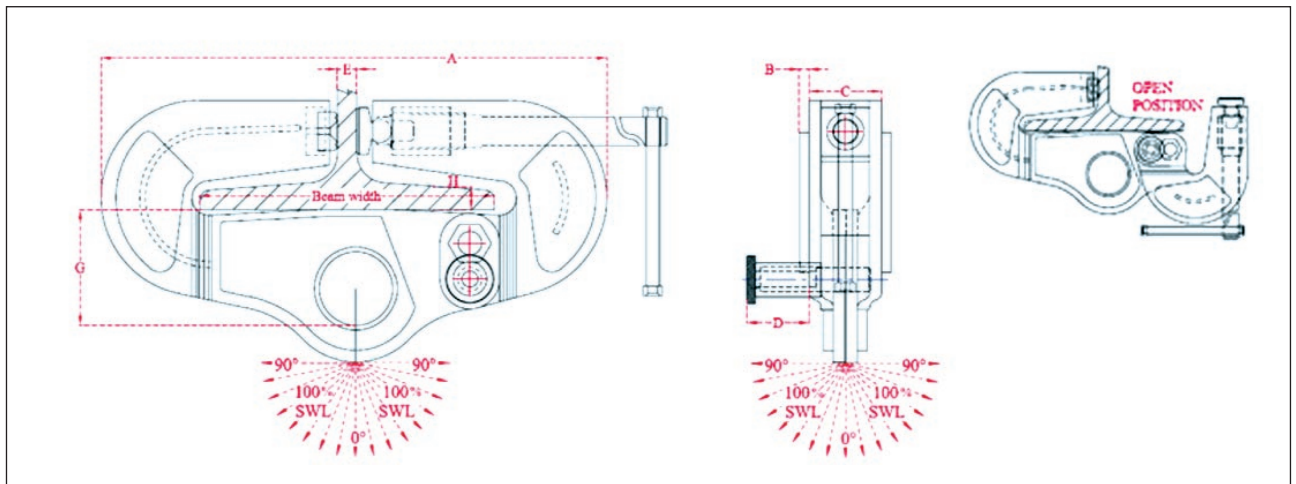


**For side load applications where conventional Superclamps are unsuitable.**

The Universal Superclamp has been designed not only for vertical use, but also for side load applications, where conventional clamps are not suitable. This clamp is truly versatile in application and can be used for lifting, pulling or as an anchor point.

It can be loaded at any angle and eliminates the use of spreader beams in various lifting operations. With a low headroom anchor point, it can be used as a single or twin point lifting, giving positive grip and quick application combined with lightweight construction.

**WARNING:** Do Not Exceed Working Load Limits or use this equipment for lifting Flat Plate Sections (not to be used as a plate lifting clamp).



Model Code	W.L.L. kg	Beam Width	Dimensions							Weight kg
			A	B	C	D	E	G	H	
USC3A	3048	125-204	387	N/A	70	48	32	108	25.4	13.5
USC4	4064	125-305	518	10	70	48	32	146	25.4	23.5
USC5	5080	125-305	524	10	75	48	32	146	25.4	28.5
USC5D	10160	125-305	524	10	75	102	32	146	25.4	33.5
USCD400	10160	225-400	624	10	75	102	32	146	25.4	43.1