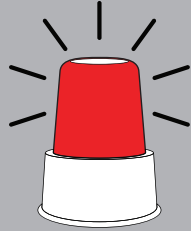
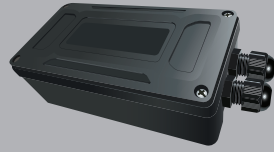




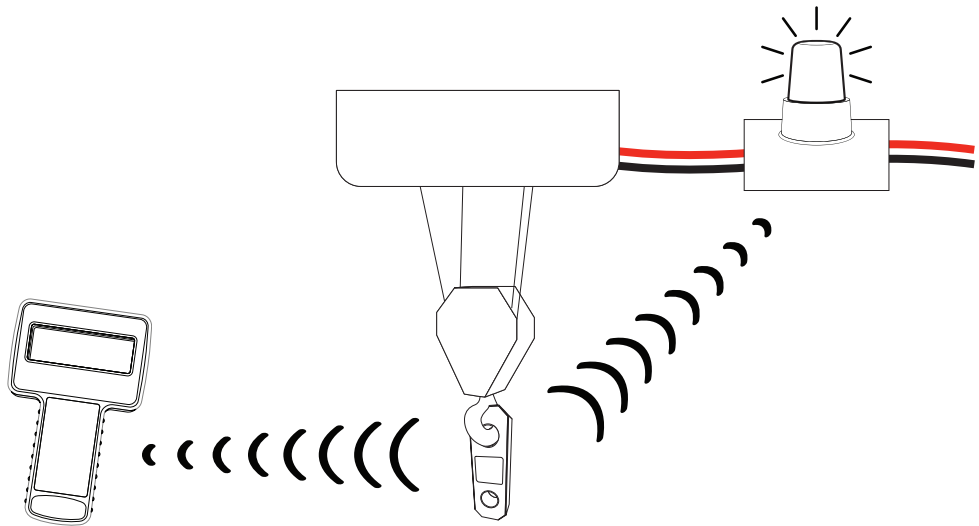
SW-OAM



SW-OAM

Wireless overload alarm module

The SW-OAM is a wireless relay module featuring audio and visual warning indicators. The unit's two set point alarms can be triggered from a single or summed group of up to eight Straightpoint wireless load cells. The SW-OAM is ideal as a wireless overload detection system.



Solution

Features and benefits:

- Spare relay contacts to allow connection to other device
- Audible and visual alarm
- Wireless connection to load cell
- Fully configurable
- Wide range for power supply input
- IP65/NEMA 4 Enclosure

Global Specifications Parameter	Minimum	Typical	Maximum	Units	Notes
Supply voltage range	9	12	32	Volts	
Operational current - no relays active	-	60mA		mA	At 12V supply TBC
Operational current - all relays active	-	80mA		mA	At 12V supply TBC
Operating temperature range	-10°C (14°F)	-	60°C (149°F)	°C (°F)	
Storage temperature range	-20°C (-4°F)	-	65°C (149°F)	°C (°F)	
5 amp relays	-	240V 5A	-		
Range	700m / 2300ft				

