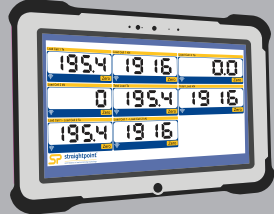
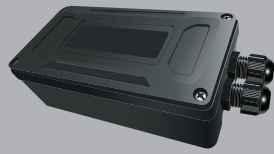




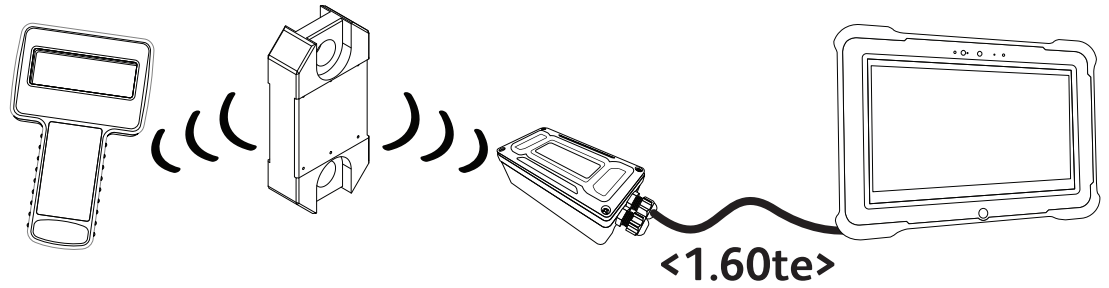
# SW-SO



## SW-SO

Serial output ASCII string module

Ideal for integration to a PC, PLC or other device requiring a simple RS232 serial input, this module allows for a user defined ASCII string which can include individual or summed data from up to eight Straightpoint wireless load cells.



## Solution

### Features and benefits:

- Sums up to 8 loadcells to digital output
- ASCII programmable using tokens
- RS232/RS485 output
- Fully configurable
- Wide range for power supply input
- IP65/NEMA 4 Enclosure

Global Specifications Parameter	Minimum	Typical	Maximum	Units	Notes
External Supply Voltage	9	12	32	Volts	
Average Operational	-	TBD	500	mA	
Operating Temperature	-40°C (-40°F)	-	65°C (149°F)	°C (°F)	
Storage Temperature	-40°C (-40°F)	-	65°C (149°F)	°C (°F)	
Reverse Polarity	-	-	-32	Volts	
Licence		Licence exempt			Maximum supply level
Modulation Method		MS (QPSK)			
Radio Type		Transceiver (2 way)			
Data Type		250		K bits/sec	
Radio Frequency	2.4000		2.4835	GHz	
Power		1		mw	
Range			700 (2300)	Metres (Feet)*	
Channels (DSSS)		16			

\*Maximum range achieved in open field site at height of 3 metres (9.8 feet) above ground.

